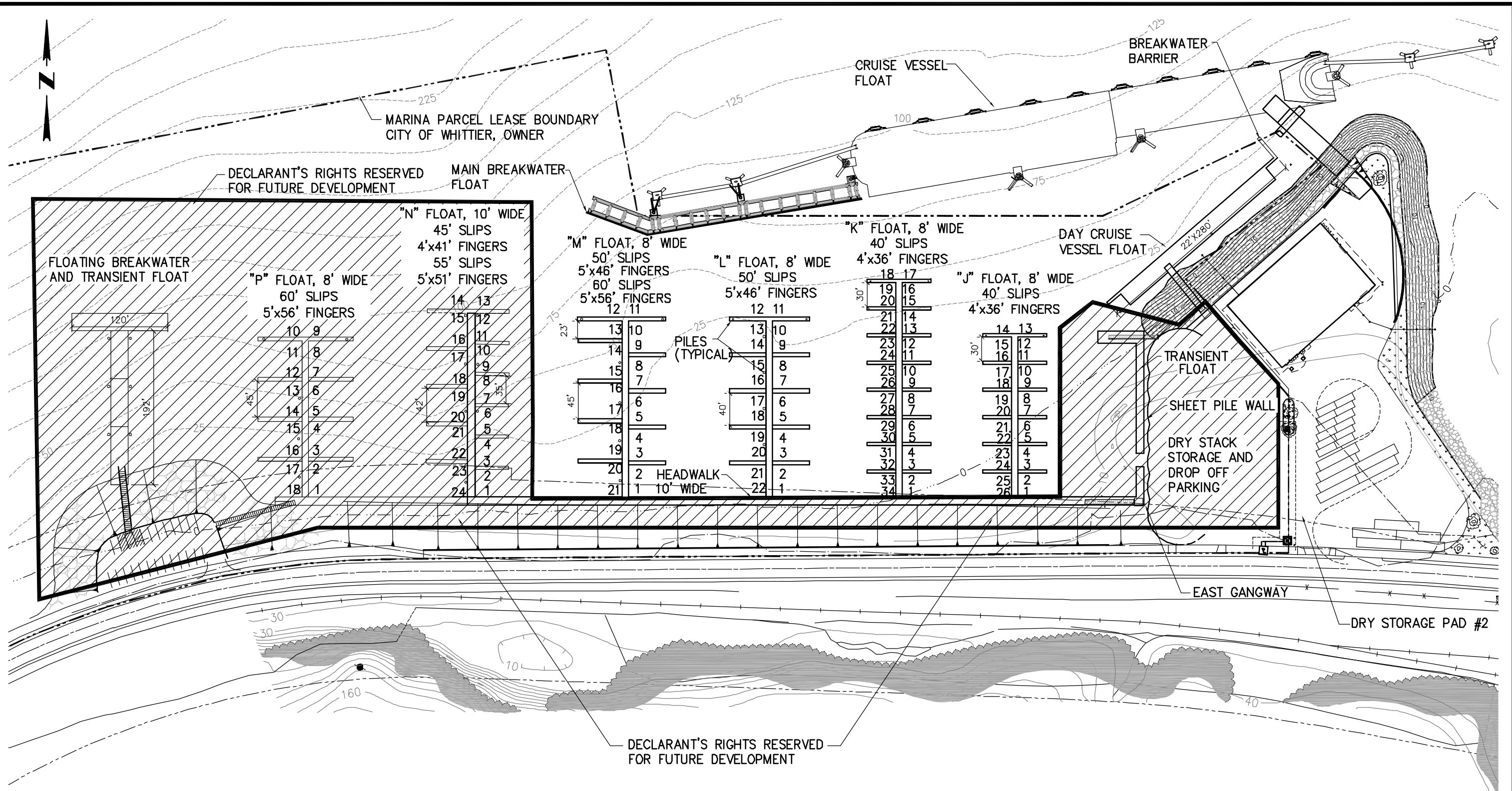


CAD File: J:\2003\031096 Whittier Railroad-PC9 Projects\DRAWINGS\Marina Drawings March 2004\00 - Exhibit C for the Declaration of Whittier Marina.dwg, [Plotted: Mon, 12 Apr 2004 - 10:12pm]



SITE LAYOUT

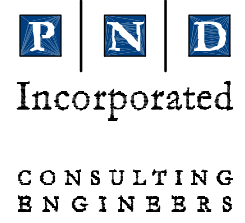
NOTES:

1. MAIN BREAKWATER FLOAT TO BE CONSTRUCTED WHEN THE FLOATING BREAKWATER AND TRANSIENT FLOAT AND "N" & "P" FLOATS ARE COMPLETED.
2. "N" FLOAT SHALL BE OPERATED BY DECLARANT FOR TRANSIENT, SUMMER USE ONLY UNTIL THE MAIN BREAKWATER, FLOATING BREAKWATER AND TRANSIENT FLOAT AND "N" AND "P" FLOATS ARE COMPLETED.
3. THIS DRAWING IS BEING PRODUCED TO SHOW THE WHITTIER MARINA IMPROVEMENTS FOR A CONDOMINIUM SALE DECLARATION. NO BOUNDARY RETRACEMENT SURVEYS OF THE MARINA PARCEL WERE PERFORMED BY PND.
4. THIS MAP DOES NOT CONSTITUTE A SUBDIVISION AND SHOULD ONLY BE USED AS AN EXHIBIT FOR THE DECLARATION OF WHITTIER MARINA.
5. ACCORDING TO AGREEMENT BETWEEN THE DECLARANT AND THE CITY OF WHITTIER, LEASE BOUNDARIES ARE TO BE FIRMLY ESTABLISHED BY SURVEY AND PLAT IN ACCORDANCE WITH APPLICABLE ORDINANCES OF THE CITY OF WHITTIER AFTER THE INSTALLATION OF THE IMPROVEMENTS.

Peratovich, Nottingham, and Drage, Inc. (PND) is not responsible for safety programs, methods or procedures of operation, or the construction of the design shown on these drawings. Where specifications are general or not called out, the specifications shall conform to standards of industry. Drawings are for use on this project only and are not intended for reuse without written approval from PND. Drawings are also not to be used in any manner that would constitute a detriment directly or indirectly to PND.

REV	DATE	DESCRIPTION

1506 West 36th Avenue
Anchorage, Alaska 99503
Phone: 907.561.1011
Fax: 907.563.4220
www.pndengineers.com



PASSAGE CANAL DEVELOPMENT, LLC

EXHIBIT C FOR THE DECLARATION OF WHITTIER MARINA

DRAWN BY: WRJ	DATE: MARCH '04	SHEET NO: 00
DESIGNED BY: DN	PROJECT NO: 031096	OF 18
CHECKED BY: DN		